

Company Outline

(As of March 31, 2013)

Company Name.....MANDOM CORPORATION
Head Office.....5-12, Juniken-cho, Chuo-ku,
 Osaka, 540-8530, Japan
Established.....December 23, 1927
Paid-in Capital.....¥11,394,817,459

Number of Employees.....2,221 (Consolidated), 522 (Non-consolidated)
Fiscal Year-end.....March 31
General Meeting of Shareholders.....Ordinary General Meeting of Shareholders Every June
Independent Auditor.....Deloitte Touche Tomatsu LLC

Group Companies

	Company Names	Location	Main Businesses	Voting Rights
JAPAN	Piacelabo Corporation	Japan	Sale of cosmetics and other products	100.0% consolidated subsidiary
	mbs Corporation	Japan	Life and non-life insurance agency services, staffing, general services, and quality control of domestic Group company products	100.0% non-consolidated subsidiary
INDONESIA	PT Mandom Indonesia Tbk	Indonesia	Manufacture and sale of cosmetics and other products	60.8% consolidated subsidiary
ASEAN	Mandom Corporation (Thailand) Ltd.	Thailand	Sale of cosmetics and other products	100.0% consolidated subsidiary
	Mandom Philippines Corporation	The Philippines	Sale of cosmetics and other products	100.0% consolidated subsidiary
	Mandom (Malaysia) Sdn. Bhd.	Malaysia	Sale of cosmetics and other products	99.0% consolidated subsidiary
NIES	Mandom Corporation (Singapore) Pte. Ltd.	Singapore	Sale of cosmetics and other products	100.0% consolidated subsidiary
	Mandom Taiwan Corporation	Taiwan	Sale of cosmetics and other products	100.0% consolidated subsidiary
	Sunwa Marketing Co., Ltd.	China (Hong Kong)	Sale of cosmetics and other products	44.0% equity-method affiliate
	Mandom Korea Corporation	South Korea	Sale of cosmetics and other products	100.0% consolidated subsidiary
CHINA	Zhongshan City Rida Cosmetics Co., Ltd.	China (Zhongshan)	Manufacture and sale of cosmetics and other products	66.7% consolidated subsidiary
	Mandom China Corporation	China (Shanghai)	Sale of cosmetics and other products	100.0% consolidated subsidiary
INDIA	Mandom Corporation (India) Pvt. Ltd.	India	Sale of cosmetics and other products	100.0% consolidated subsidiary

Stock and Shareholder Information

(As of March 31, 2013)

Number of Shares

Authorized for Issue81,969,700

Shares of Common Stock

Issued and Outstanding.....24,134,606

Number of Shareholders.....18,558

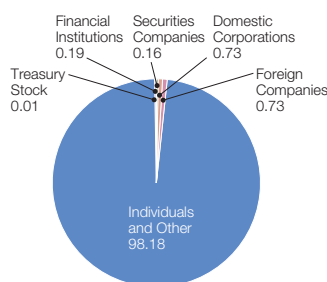
Stock Listing.....First Section,

Tokyo Stock Exchange

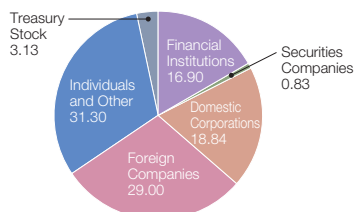
Securities Code.....4917

Transfer Agent.....The Mitsui Sumitomo Trust
and Banking Co., Ltd.

Common Stock Holdings



Shareholders by Type (%)



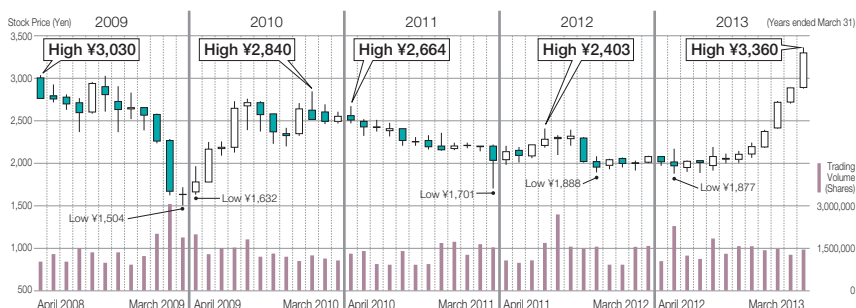
Shareholders by Holding (%)

Major Shareholders

Shareholder Name or Title	No. of Shares Owned (Thousands)	Ratio of Share Ownership (%)
Nishimura International Scholarship Foundation	1,800	7.46
STATE STREET BANK AND TRUST COMPANY	1,312	5.44
BNP PARIBAS SEC SERVICES LUXEMBOURG/JASDEC/ABERDEEN GLOBAL CLIENT ASSETS	1,255	5.20
Japan Trustee Services Bank, Ltd. (trust account)	1,004	4.16
The Master Trust Bank of Japan, Ltd. (trust account)	986	4.09
Mandom Corporation	754	3.13
Mandom Employee Shareholding Association	751	3.12
Motonobu Nishimura	720	2.98
BNP PARIBAS SEC SVC LONDON /JAS/ABERDEEN INVESTMENT FUNDS ICVC/ AGENCY LENDING	489	2.03
Sumiko Nishimura	353	1.46

Note: Figures less than 1,000 shares have been omitted.

Stock Price and Transaction Volume



Mandom Group Corporate IR Activities

Based on the Japanese disclosure system, we disclose our corporate information in a timely and proper manner and achieve our accountability goals.

1. As a company listed on the Tokyo Stock Exchange (TSE), we will comply with Japan's Financial Instruments and Exchange Law, TSE's rules of timely disclosure of corporate information and other relevant laws, and regulations and rules.
2. The Japanese disclosure system will be duly observed. In addition, we will disclose our corporate information in a fair, timely, and proper manner at our own discretion, which will promote understanding of the Mandom Group.
3. Sound relationships with a variety of stakeholders will be maintained and further enhanced. We will achieve full accountability for disclosed information.

Contact: Corporate Communications & Investor Relations Division Address: 5-12, Juniken-cho, Chuo-ku, Osaka 540-8530, Japan
 E-mail: ir@mandom.co.jp URL: <http://www.mandom.co.jp/>