

Management Information

Executives, Audit & Supervisory Board Members

Directors

(As of June 24, 2014)



From left: Tatsuyoshi Kitamura, Ryuichi Terabayashi, Motonobu Nishimura, Masayoshi Momota, Satoshi Nakajima, Satoshi Nagao

Representative Director
President Executive Officer
Motonobu Nishimura

Representative Director
Vice President Executive Officer
Masayoshi Momota

Director
Senior Managing Executive Officer
Ryuichi Terabayashi

Director
Managing Executive Officer
Tatsuyoshi Kitamura

External Director
Satoshi Nakajima

External Director
Satoshi Nagao

Audit & Supervisory Board Members

(As of June 24, 2014)



From left: Masatoshi Tsuda, Yoshiaki Saito, Yukihiro Tsujimura

Audit & Supervisory Board Member
Yoshiaki Saito

External Audit & Supervisory Board Member
Masatoshi Tsuda

External Audit & Supervisory Board Member
Yukihiro Tsujimura

Executive Officers (Excluding company directors holding two posts concurrently)

(As of June 24, 2014)

Managing Executive Officer
Hironao Suzuki

Managing Executive Officer
Shinichiro Koshiba

Managing Executive Officer
Tatsuya Arichi

Executive Officer
Yasuaki Kameda

Executive Officer
Kazunori Koshikawa

Executive Officer
Norikazu Furubayashi

Executive Officer
Takeshi Hibi

Executive Officer
Noboru Nonaka

Executive Officer
Koichi Watanabe

Executive Officer
Shinya Nagai

Corporate Data

Company Outline, Stock and Shareholder Information

Company Outline

(As of March 31, 2014)

Company Name MANDOM CORPORATION
Head Office 5-12, Juniken-cho, Chuo-ku,
Osaka, 540-8530, Japan
Established December 23, 1927
Paid-in Capital ¥11,394,817,459

Number of Employees 2,316 (Consolidated)
524 (Non-consolidated)
Businesses Manufacture and sale of cosmetics
and perfumes, manufacture and
sales of quasi-drugs
Fiscal Year-end March 31

General Meeting of Shareholders Ordinary general meeting of
shareholders every June
Independent Auditor ...Deloitte Touche Tohmatsu LLC

Group Companies

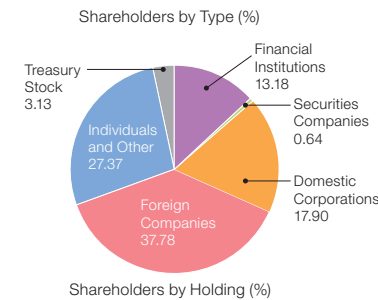
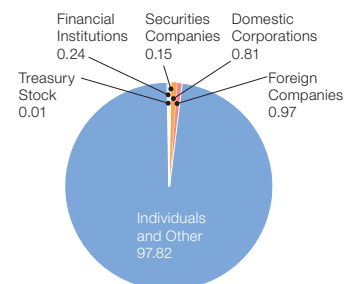
Company Name	Location	Main Businesses	Voting Rights
Piacelabo Corporation	Japan	Sale of cosmetics and other products	100.0% consolidated subsidiary
mbs Corporation	Japan	Life and non-life insurance agency services, general services and quality control of domestic Group company products	100.0% non-consolidated subsidiary
PT Mandom Indonesia Tbk	Indonesia	Manufacture and sale of cosmetics and other products	60.8% consolidated subsidiary
Mandom Corporation (Thailand) Ltd.	Thailand	Sale of cosmetics and other products	100.0% consolidated subsidiary
Mandom Philippines Corporation	Philippines	Sale of cosmetics and other products	100.0% consolidated subsidiary
Mandom (Malaysia) Sdn. Bhd.	Malaysia	Sale of cosmetics and other products	99.0% consolidated subsidiary
Mandom Corporation (Singapore) Pte. Ltd.	Singapore	Sale of cosmetics and other products	100.0% consolidated subsidiary
Mandom Taiwan Corporation	Taiwan	Sale of cosmetics and other products	100.0% consolidated subsidiary
Sunwa Marketing Co., Ltd.	China (Hong Kong)	Sale of cosmetics and other products	44.0% equity-method affiliate
Mandom Korea Corporation	Korea	Sale of cosmetics and other products	100.0% consolidated subsidiary
Zhongshan City Rida Cosmetics Co., Ltd.	China (Zhongshan)	Manufacture and sale of cosmetics and other products	66.7% consolidated subsidiary
Mandom China Corporation	China (Shanghai)	Sale of cosmetics and other products	100.0% consolidated subsidiary
Mandom Corporation (India) Pvt. Ltd.	India	Sale of cosmetics and other products	100.0% consolidated subsidiary

Stock and Shareholder Information

(As of March 31, 2014)

Number of Shares Authorized for Issue81,969,700
Shares of Common Stock Issued and Outstanding24,134,606
Number of Shareholders16,343
Stock ListingFirst Section, Tokyo Stock Exchange
Securities Code4917
Transfer AgentThe Mitsui Sumitomo
Trust and Banking Co., Ltd.

Common Stock Holdings

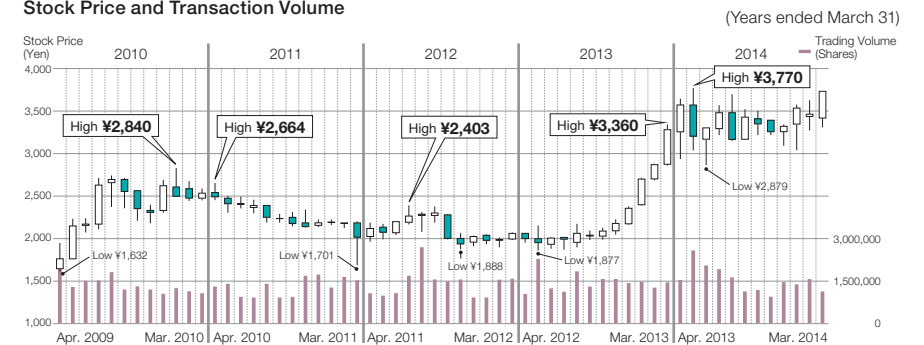


Major Shareholders

Shareholder Name or Title	No. of Shares Owned (Thousands)	Ratio of Share Ownership (%)
BNP PARIBAS SEC SERVICES LUXEMBOURG / JASDEC / ABERDEEN GLOBAL CLIENT ASSETS	2,274	9.43
Nishimura International Scholarship Foundation	1,800	7.46
STATE STREET BANK AND TRUST COMPANY	839	3.48
Mandom Corporation	755	3.13
Motonobu Nishimura	720	2.98
Mandom Employee Shareholding Association	692	2.87
Japan Trustee Services Bank, Ltd. (trust account)	668	2.77
The Master Trust Bank of Japan, Ltd. (trust account)	542	2.25
BNP PARIBAS SEC SVC LONDON / JAS / ABERDEEN INVESTMENT FUNDS ICVC / AGENCY LENDING	516	2.14
BNYM SA / NV FOR BNYM CLIENT ACCOUNT MPSC JAPAN	367	1.52

Note: Figures less than 1,000 shares have been rounded down.

Stock Price and Transaction Volume



Mandom Group Corporate IR Activities

Based on the Japanese disclosure system, we disclose our corporate information in a timely and proper manner and achieve our accountability goals.

1. As a company listed on the Tokyo Stock Exchange (TSE), we will comply with Japan's Financial Instruments and Exchange Law, TSE's rules of timely disclosure of corporate information and other relevant laws, and regulations and rules.
2. The Japanese disclosure system will be duly observed. In addition, we will disclose our corporate information in a fair, timely, and proper manner at our own discretion, which will promote understanding of the Mandom Group.
3. Sound relationships with a variety of stakeholders will be maintained and further enhanced. We will achieve full accountability for disclosed information.

Contact: Corporate Communications & Investor Relations Division Address: 5-12, Juniken-cho, Chuo-ku, Osaka 540-8530, Japan
E-mail: ir@mandom.co.jp URL: <http://www.mandom.co.jp/>