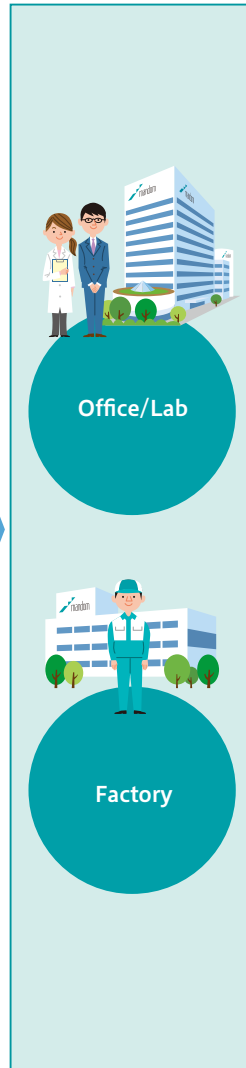
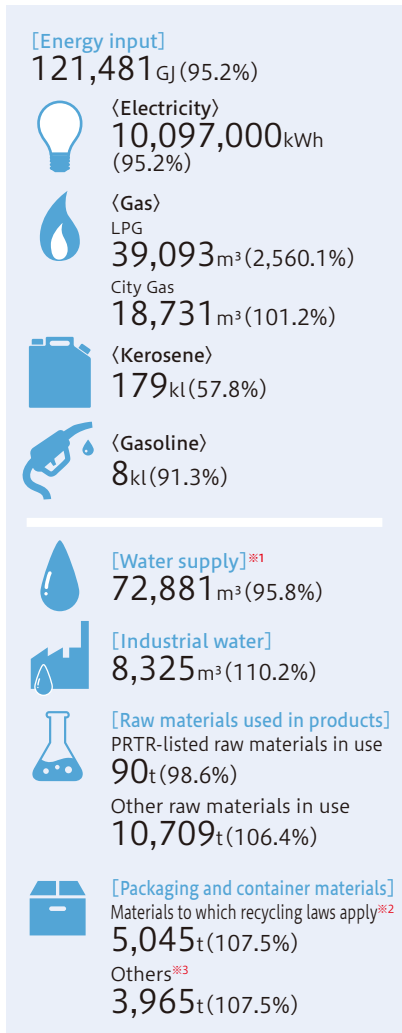
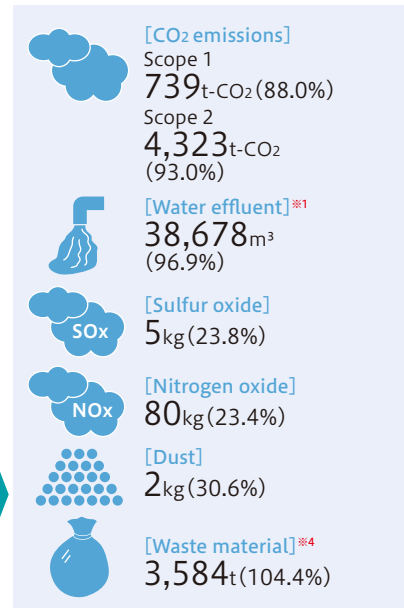


Overview of Domestic Environmental Load of the Mandom Group (FY2018 results and year-on-year comparisons with previous years)

【Factory, Office/Lab】



【Factory, Office/Lab】



Industrial waste recycle rate 99.9% (99.6%)

● Fukusaki Factory	100.0% (99.8%)
● Head Office, Labs	100.0% (100.0%)
● Regional offices in Japan	100.0% (52.6%)
● Others	99.5%

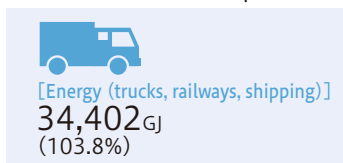
Notes: "Others" includes industrial waste resulting from returned goods or promotional items. Percentages in parentheses are recycle rates that include office and general waste.

Recycling status of industrial waste produced at the Fukusaki Factory and during distribution

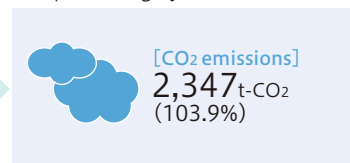
● Material recycling	2,083t (94.6%)
● Chemical recycling	0t
● Thermal recycling	908t (83.5%)
● Landfill quantity	0t (0.0%)

(Note: figures do not include outsourced processing)

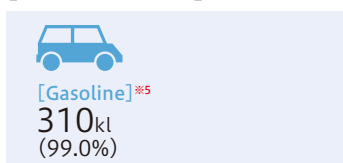
【Distribution/Transport】



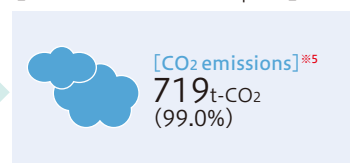
【Distribution/Transport】 (Scope 3, Category 4)



【Sales activities】



【Sales activities (Scope 1)】



※1 Water supply and water effluent quantities do not include regional office data (because of difficulty in obtaining such information).

※2 Containers using materials such as glass, paper, plastic, etc.
※3 The figure for container and packaging materials does not include distribution materials (because of difficulty in calculating such information).

※4 Waste figures include industrial waste, as well as returned goods (including atmospheric dispersal) and promotional items.

※5 Including estimates for field staff, etc.



【Customer】

